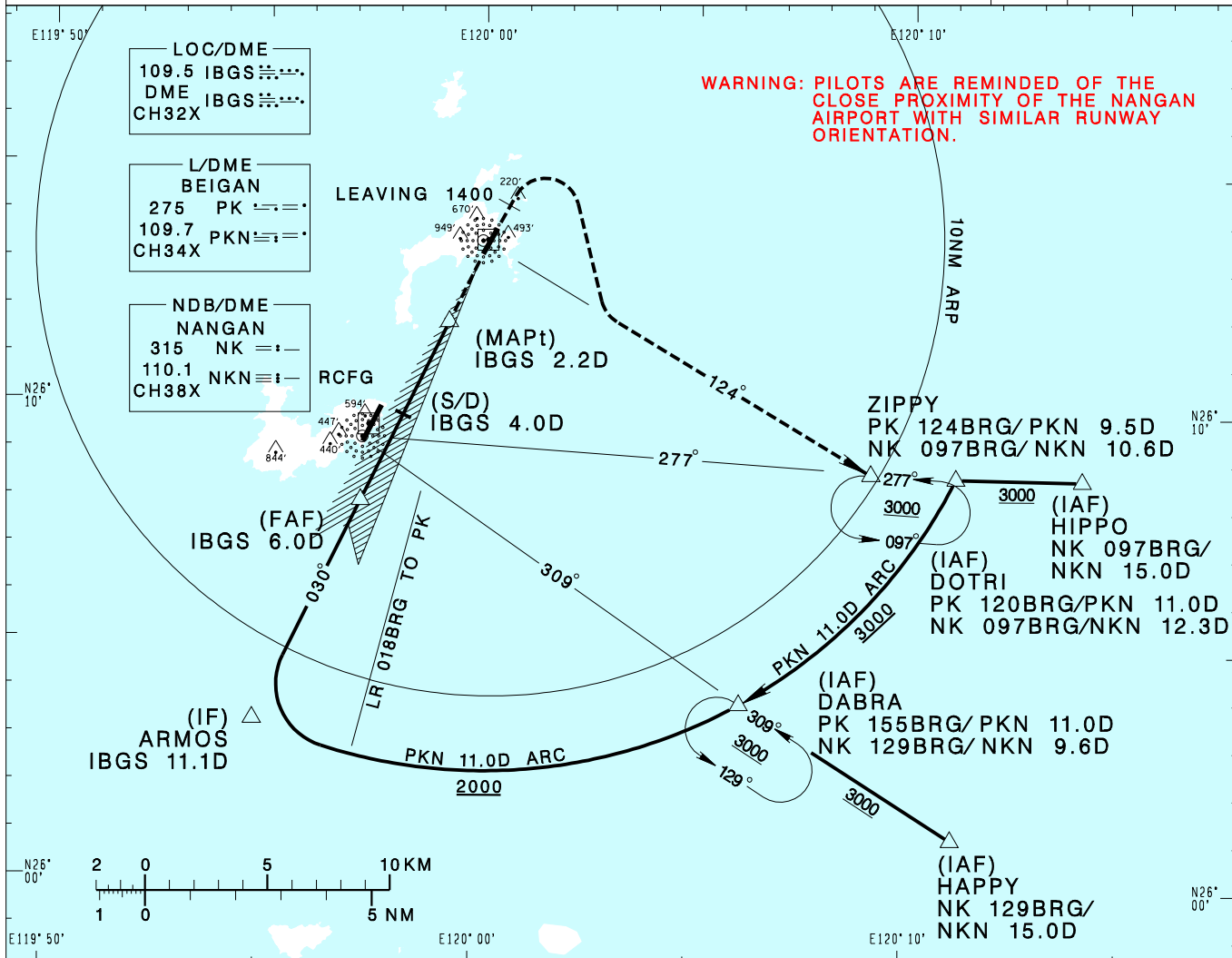


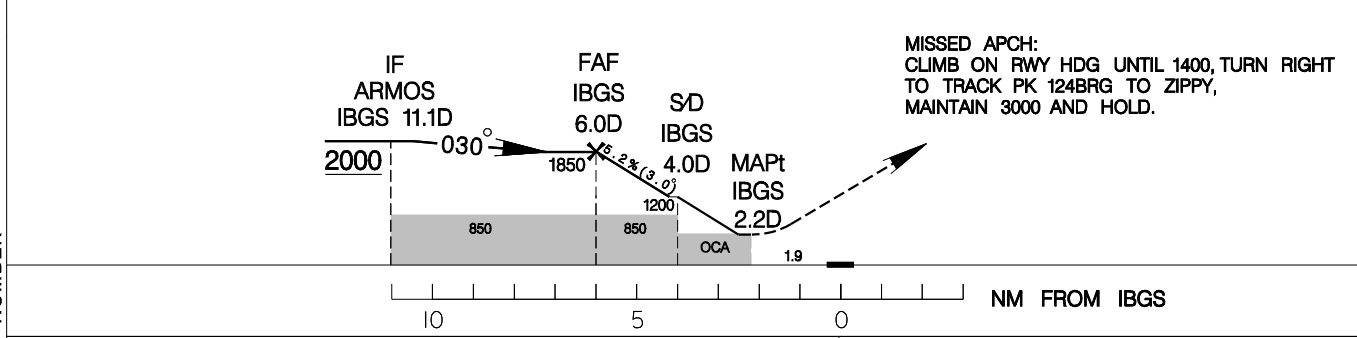
馬祖/北竿機場
MATSU/BEIGAN AD

RCMT
LDA RWY03

TAIPEI APP 121.0 122.3	BEIGAN TWR 118.65	ATIS 127.35		
Apt Elev: 41'	Rwy03 THR Elev: 26'	Trans Level: FL130		Trans Alt: 11,000'
BEARINGS ARE MAGNETIC; DISTANCES ARE NAUTICAL MILES; ELEVATIONS, HEIGHTS IN FEET				



6DME	5DME	4DME	3DME	2.6DME	DIST to IBGS
1850	1540	1230	910	780	ADVISORY ALT



MINIMA (OCA IN FT, VIS IN M, OCH IN FT)			<p>NOTE</p> <ol style="list-style-type: none"> CAUTION HIGH TERRAIN NEAR THE AIRPORT. CIRCLING NA NORTHWEST OF AIRPORT. CIRCLING TO RWY 21 N/A AT NIGHT. THE FINAL APCH COURSE OFFSETS FROM RWY CENTERLINE EXTENSION BY 2.7 DEG, AND INTERSECTS AT 1400M FROM THR OF RWY03. <p>*DME REQUIRED.</p>
CATEGORY	A	B	
STRAIGHT-IN MA C/G 4.7%(286ft/NM)	780/2000 754	780/2400 754	
CIRCLING	1300/3600	1259	

CHANGES: NEW PAGE NUMBER